

CYBERSECURITY SHEET



# OpenBlue Enterprise Manager

## A comprehensive approach to keeping your business safe

Gain peace of mind with cyber-resilient systems and solutions which protect your data for use within this cloud application. Security is designed into all Johnson Controls products, hardware, hosted services and software. The OpenBlue Enterprise Manager security features listed below enable you to unlock the value in your building knowing that your systems are protected.



### Data-at-rest protection

AES-256 encryption protects data-at-rest



### Zero-trust cloud architecture

OpenBlue from site-to-cloud and within applies zero-trust management for enhanced data protection



### Role-based access control (RBAC)

Assign permissions according to authorized roles



### Network security

Web Application Firewall (WAF) protects against sophisticated attacks



### Validated authentication

Multi-Factor Authentication (MFA) enhances access control by requiring additional proof of identity



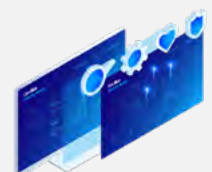
### Regular vulnerability assessments

The OpenBlue environment is continuously monitored for cyber events using automated tools

### About OpenBlue Enterprise Manager

OpenBlue Enterprise Manager is a software as a service solution which powers a new class of smart commercial buildings that are more secure, healthy and sustainable. It is made up of a suite of solutions to manage and optimize commercial buildings; to improve energy efficiency, reduce carbon emissions, optimize space use and equipment performance with focus on the health and well-being of occupants. OpenBlue Enterprise Manager provides real-time data visibility across assets, people and processes, empowering you to drive intelligent and proactive operations.

Learn more [here](#)

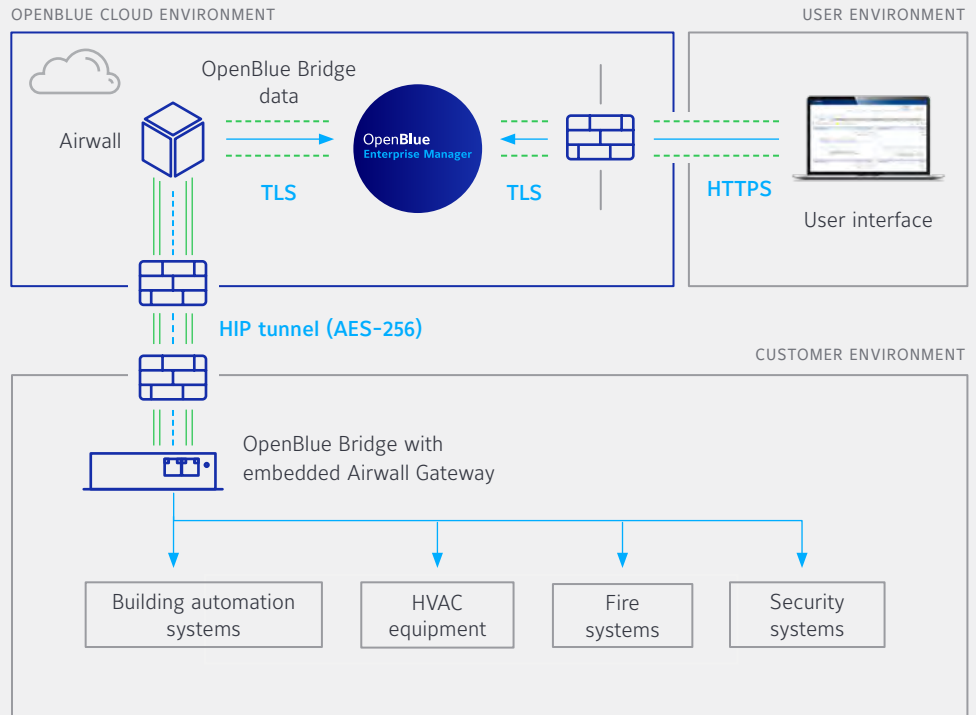


# How OpenBlue Enterprise Manager protects your people and assets

**Architectural environment is representative of OpenBlue Bridge with embedded Airwall Gateway**

**Cloud**  
OpenBlue hosted data and applications.

**Zero-trust communication**  
Smart building data is collected and packaged via the OpenBlue Bridge with its embedded Airwall Gateway for transport and conveyed securely via Host Identity Protocol (HIP) tunnel to the cloud.



## ISASecure® Security Development Lifecycle Assurance (SDLA) certified

All Johnson Controls global development locations comply with this security lifecycle development certification conforming with ISA/IEC 62443-4-1 and encompassing all associated brands. This certification reinforces our customer commitment to provide cyber-resilient solutions that follow best-in-class industry practices.

## SOC 2 Type II Report compliance

A SOC 2 Type II audit is an evaluation of an organization's information systems and controls based on the criteria outlined in the Trust Service Criteria. It focuses on security, availability, processing integrity,

confidentiality and privacy. The "Type II" indicates that the audit covers a specified time period (usually a minimum of six months), to assess the effectiveness of the controls in place.

## ISO27001 Certification

ISO/IEC 27001:2013 is an international standard that specifies the requirements for establishing, implementing, maintaining and continually improving an Information Security Management System (ISMS) within the context of the organization's overall business risks. The standard provides a systematic approach to managing sensitive information ensuring its confidentiality, integrity and availability.



ISASecure® Security Development Lifecycle Assurance (SDLA) program certified



SOC 2 Type II Report Compliance\*



ISO27001 Certification\*

\* The US instance has successfully undergone SOC 2 Type 2 Audit and ISO/IEC 27001:2013 Certification. International instances have substantially similar controls and protocols.

We combine our critical focus on cybersecurity and privacy with digital innovation and building expertise to deliver smart building solutions.

To learn more, please visit our website at [www.johnsoncontrols.com/cyber-solutions](http://www.johnsoncontrols.com/cyber-solutions) or contact us at [productsecurity@jci.com](mailto:productsecurity@jci.com).

Visit [johnsoncontrols.com](http://johnsoncontrols.com) or follow us [@johnsoncontrols](https://twitter.com/johnsoncontrols)

© 2024 Johnson Controls. All rights reserved.  
DS2403001 | GPS0050-CE-EN Rev A 2024-04-05

