

# YORK® Smart Connected Chillers

Monitor performance from anywhere.  
**Because uptime is everything.**



A chiller is one of the most critical pieces of equipment in your facility. Not only is it responsible for comfort and productivity, it's responsible for half the energy used in your building. So what if you could predict when a chiller will go down, or when it's running at less than peak performance? Not only would that save you money, it would save you a ton of time and headaches.

## Here's how our Smart Connected Chillers work:

Through a secure connection, we continuously send all of the chiller's data to a high-security, cloud-based dashboard. Historical data is examined and analyzed to diagnose and troubleshoot machine problems, observe long term trends, and to investigate events leading up to a failure.

Status-related data such as warnings, cycling and safety fault codes are collected. Advanced algorithms continuously run in the cloud environment and use operational data to detect problems such as condenser or evaporator tube fouling, low refrigerant charge, drops in lube oil pressure and much more. That's all on top of new technologies that form the Internet of Things (IoT). This makes it easier than ever to stay on top of chiller maintenance. It's all designed to take a more strategic approach to maintenance and save you time and money.

## Remote diagnostics and analysis:

### Turning emergencies into non-events.

Today's Smart Connected Chillers mean fewer disruptions, reduced downtime, longer equipment life and an overall peace of mind.



**66% reduction in unplanned/emergency repairs**

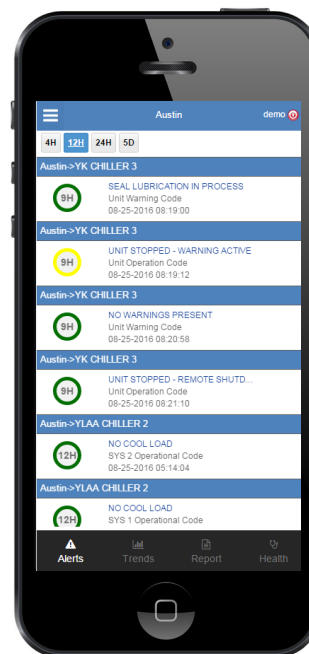
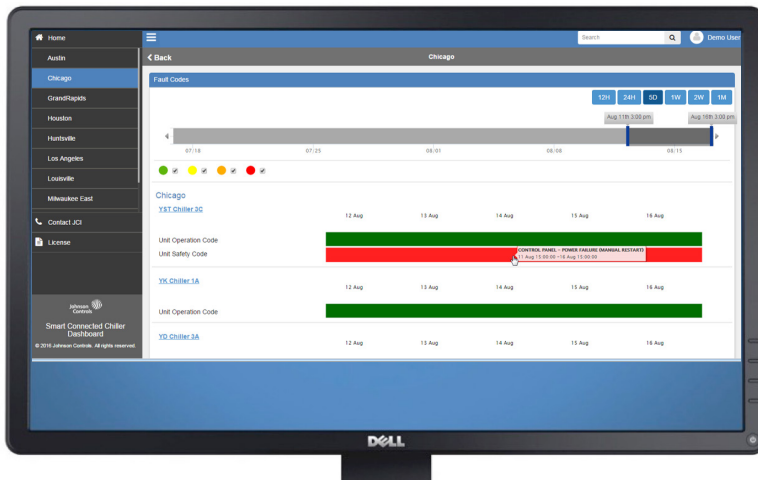


**65% reduction in mean time to repair and money both now, and in the future.**

## Real-time monitoring:

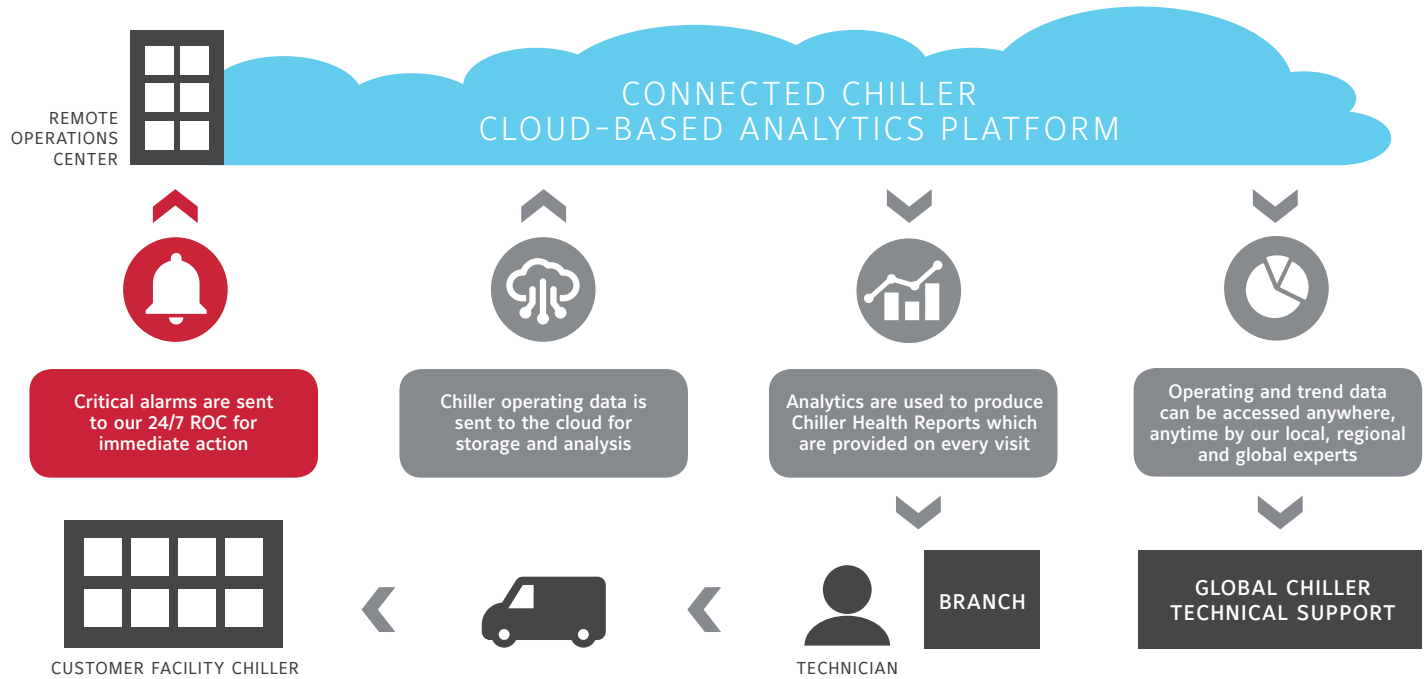
### Fast response when you need it most.

We monitor systems 24/7 in real-time and provide our chiller experts access to critical information that can save time in an emergency. Just think of us as another member of your team. If there is an alarm, the Johnson Controls Remote Operations Center notifies your local service expert immediately who can access your chiller's information, no matter where they are, to quickly diagnose the problem and get the chiller back on line.



Should you opt in to our Smart Connected Chiller Dashboard, you'll benefit from personal access to data on your computer and mobile device. Find out more by visiting [mysmartequipment.com](http://mysmartequipment.com).





## The 5 values of planned maintenance:

Get quicker resolutions for any service issues that may arise. In addition, having a Connected Chiller Planned Service Agreement will:

### ENSURE PRODUCTIVE ENVIRONMENTS

Identify faults before they affect occupant comfort or critical processes

### REDUCE FUTURE REPAIR COSTS

Reduce downtime and repair costs by proactively identifying and troubleshooting root cause issues remotely, then verifying problem resolution

### IDENTIFY ENERGY SAVINGS OPPORTUNITIES

Help identify waste through additional visibility into trend data and current operating conditions

### EXTEND ASSET LIFE

Use 24x7 connectivity to analyze trend data, reduce the risk of undetected failures and identify issues before they become serious problems

### ENVIRONMENTAL HEALTH AND SAFETY

Use advanced fault detection diagnostics to identify potential refrigerant loss

## What Chillers can be connected?

Most current models of YORK® chillers can be ordered with Smart Connected Chiller factory-installed including:

- YMC2 Centrifugal Magnetic Drive Chiller
- YK Centrifugal Chiller
- YD Dual Centrifugal Chiller
- YK-EP Centrifugal Chiller with Economizer
- YVWA Water-cooled Variable Speed Screw Chiller
- YCWL Water-cooled Scroll Chiller
- YVAA/YCIV/YCAV Air-Cooled Variable Speed
- Screw Chiller
- YCAL/YLAA Air Cooled Scroll Chiller
- YIA Single Stage Absorber

In addition, we can retrofit most existing YORK® chillers and some other manufacturers' machines with Smart Connected Chiller technology. Check with your Johnson Controls representative for details.

## Is there such a thing as too much security?

We don't think so. YORK Smart Connected Chillers are designed with security in mind and include encrypted communications on an existing network or over a dedicated cellular VPN, secure WiFi connections on existing customer networks, minimal external network access and one-way outbound communication, setpoints, schedules and commands that are read-only and can't be changed by an attacker, a built on Linux platform for optimal security with all unnecessary functions eliminated and data that's stored and accessed in Microsoft Azure cloud.

Johnson Controls tracks, identifies and proactively addresses ever-evolving cybersecurity threats every day.

## On-demand real-time insights produce results.

Now that YORK chiller performance data can be accessed and acted on remotely, the best equipment is matched with the best service and analytic capabilities available. That means you can extend equipment life, and your chiller operates at its peak, providing optimum uptime, performance and efficiency.

**For more information, go to [www.johnsoncontrols.com/smartconnectedchillers](http://www.johnsoncontrols.com/smartconnectedchillers) or contact your YORK chiller representative.**

Johnson Controls and the Johnson Controls logo are registered trademarks of Johnson Controls, Inc. in the United States of America and other countries.

Other trademarks used herein may be trademarks or registered trademarks of other companies.

©2016 Johnson Controls, Inc. P.O. Box 423, Milwaukee, WI 53201

johnsoncontrols.com // Printed in USA PUBL-8326